

Step in punched

with side plate galvanized

LIBRA

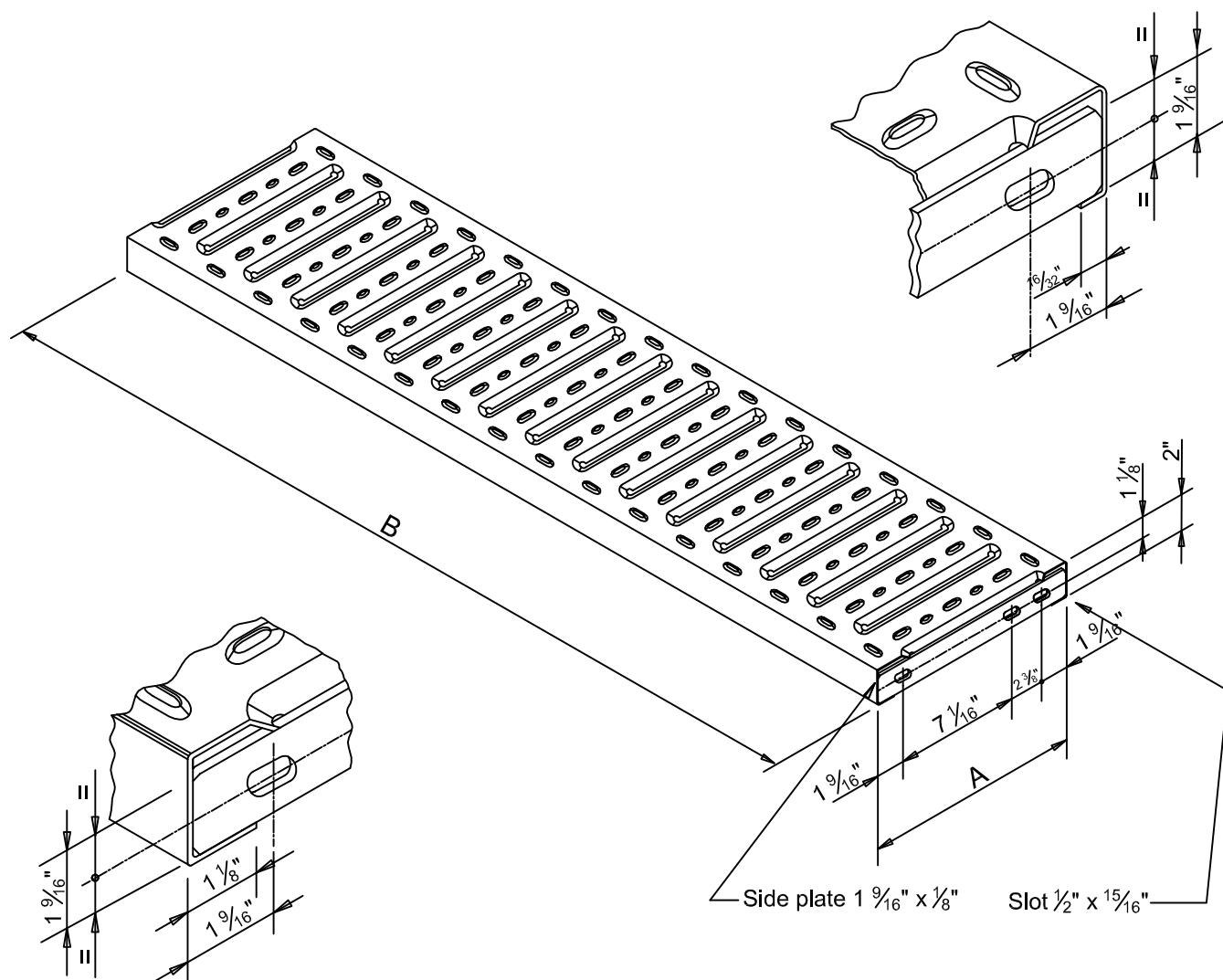


Plate	A " (mm)	B " (mm)	Weight lb/each (kg/cad)
20/10	12 ⁵ / ₈ " (320)	47 ¹ / ₄ " (1200)	20,5 (9,3)

Step in punched

LIBRA

without side plate rough

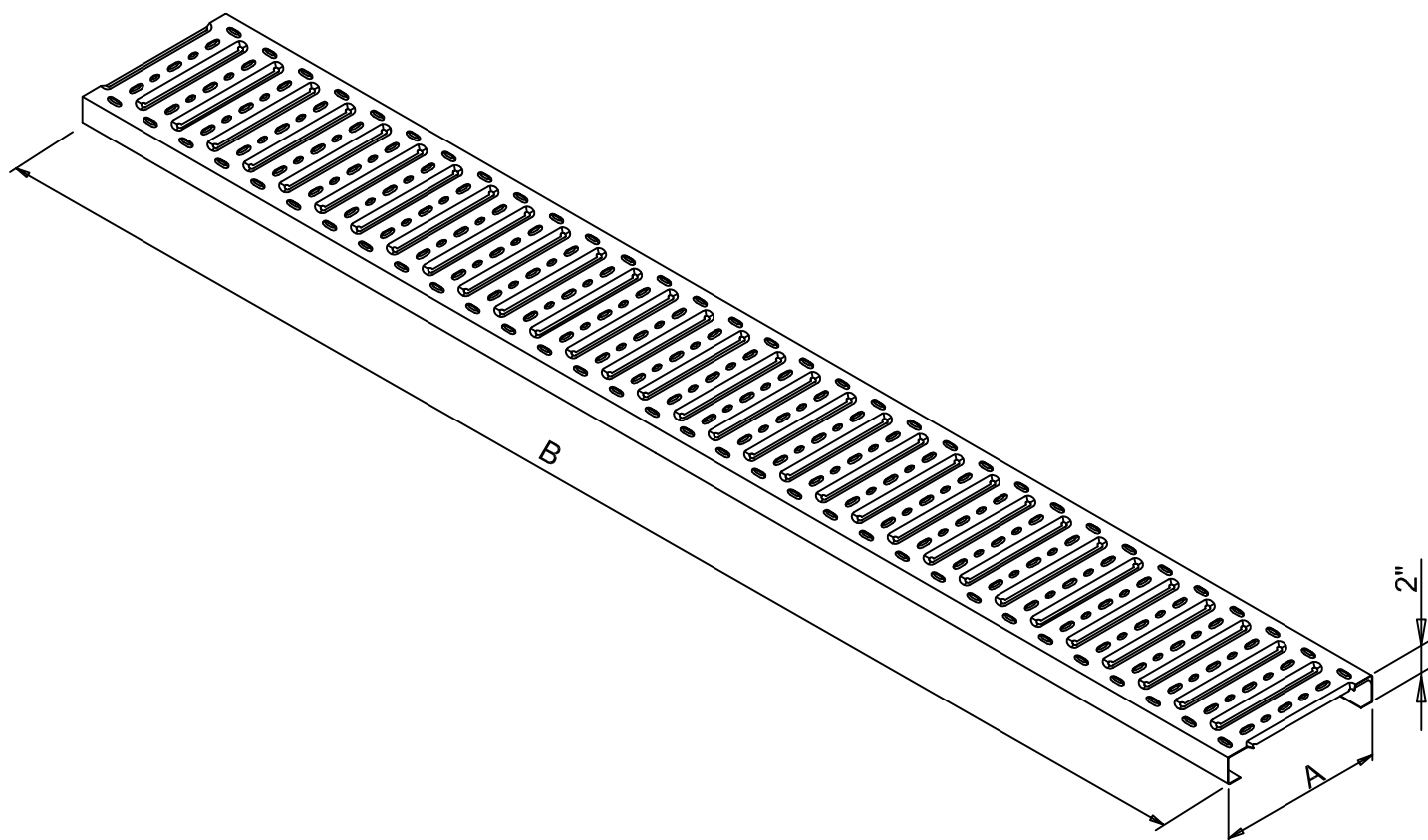


Plate	A " (mm)	B " (mm)	Weight lb/each (kg/cad)
20/10	11 ¹³ / ₁₆ " (300)	118 ¹ / ₈ " (3000)	44,3 (20,1)